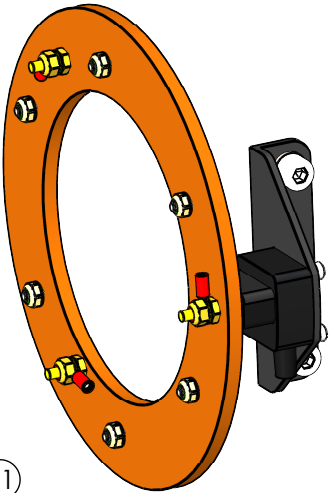
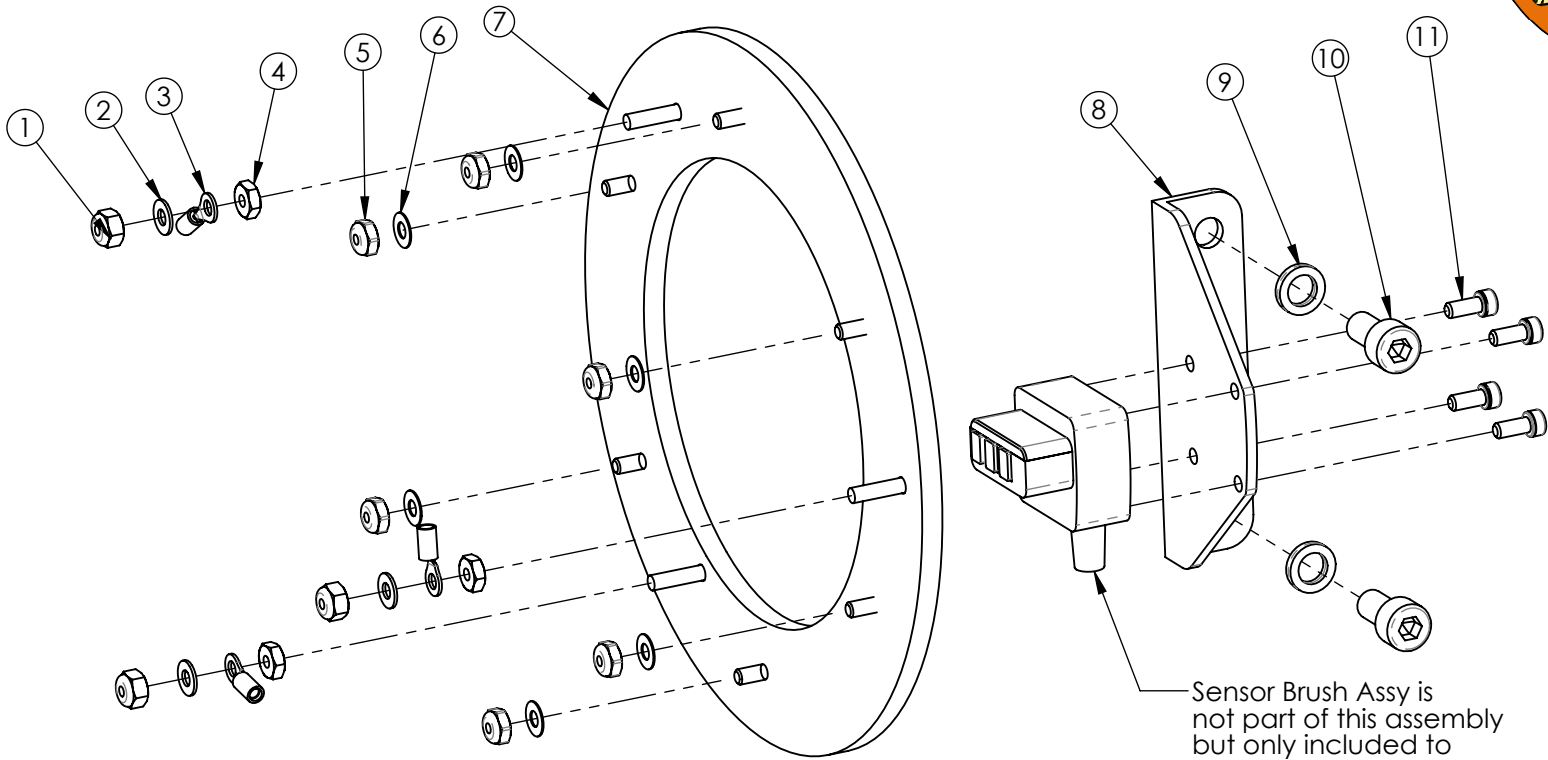


ITEM NO.	QTY.	PART NO. ASSY NO.	DESCRIPTION	REV
1	3	P0235	Locknut, brass, 8-32UNC (MS21044B08)	
2	3	P0232	Washer, brass, #8 x 0.032" (NAS1149BN816)	
3	3	P0234	PIDG Ring Tongue Terminal, #8	
4	3	P0233	MC Nut, Brass, 8-32UNC (MS35649-286B)	
5	6	P0242	Lock Nut, low height, 8-32UNC	
6	6	P0249	Washer, #8 x 0.016"	
7	1	A0870	Slipring Assy-Rotax	4
8	1	P0259	Sensor-Brush Bracket, Rotax	3
9	2	P0310	Nord-Lock Washer, M8	
10	2	P0093	Skt Hd Cap Screw M8 x 16mm ZP	
11	4	P0863	Cap Screw, 8-32UNC x 3/8" SS	

NOTE: ITEM 11 (P0863) NOT INCLUDED WHEN PROPELLER SYSTEM INCLUDES ONE OF THE FOLLOWING SPACER ASSEMBLIES: AE-RSP0.25, AE-RSP0.5, AE-RSP0.75



ASSY FILE: Slipring Assy Complete

DRG FILE: AR-RS Rotax Slipring Assy BOM

ASSY NO: **AR-RS**

REV: **2**

DESCRIPTION: **Rotax Slipring Complete Assy**

2	A0870 to Rev 4	22/06/22
1C	A0870 to Rev 3	08/11/21
1B	A0870 to Rev 2A	11/11/20
1A	Slipring Brazing to Spot Welding	07/10/19
1	Original	22/01/13
REV	DESCRIPTION	DATE

BOM

**COPYRIGHT
RESERVED ©**

Airmaster

Airmaster Propellers Ltd
20 Haszard Rd, Massey
PO Box 374, Kumeu Email: support@propellor.com
Auckland, New Zealand Web: www.propellor.com

The information contained in this drawing is the sole property of Airmaster. Any reproduction in part or whole without written permission of Airmaster is prohibited.